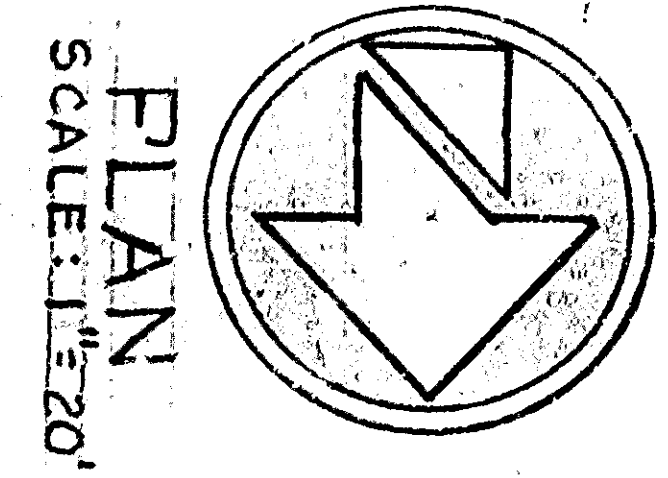
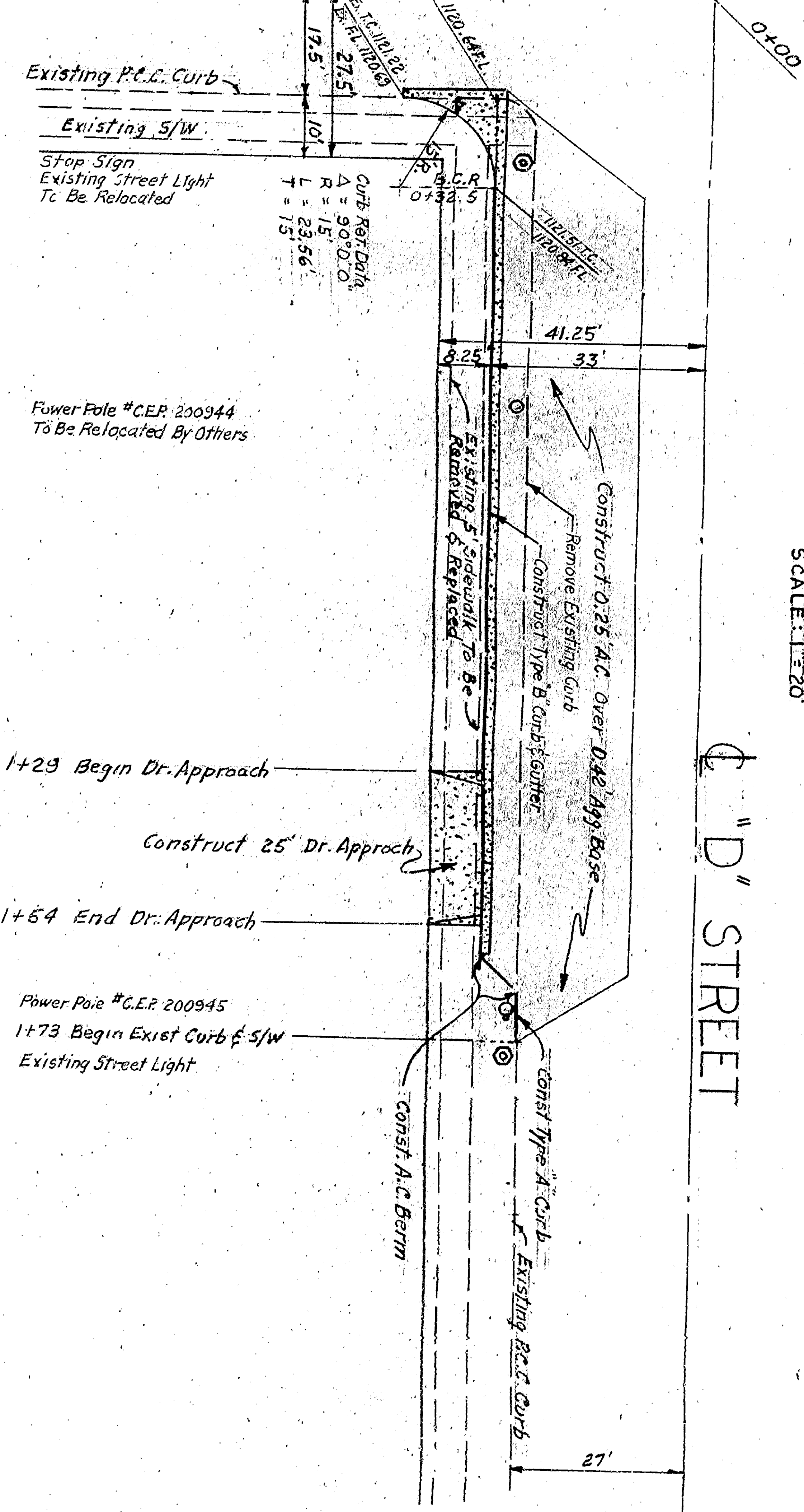
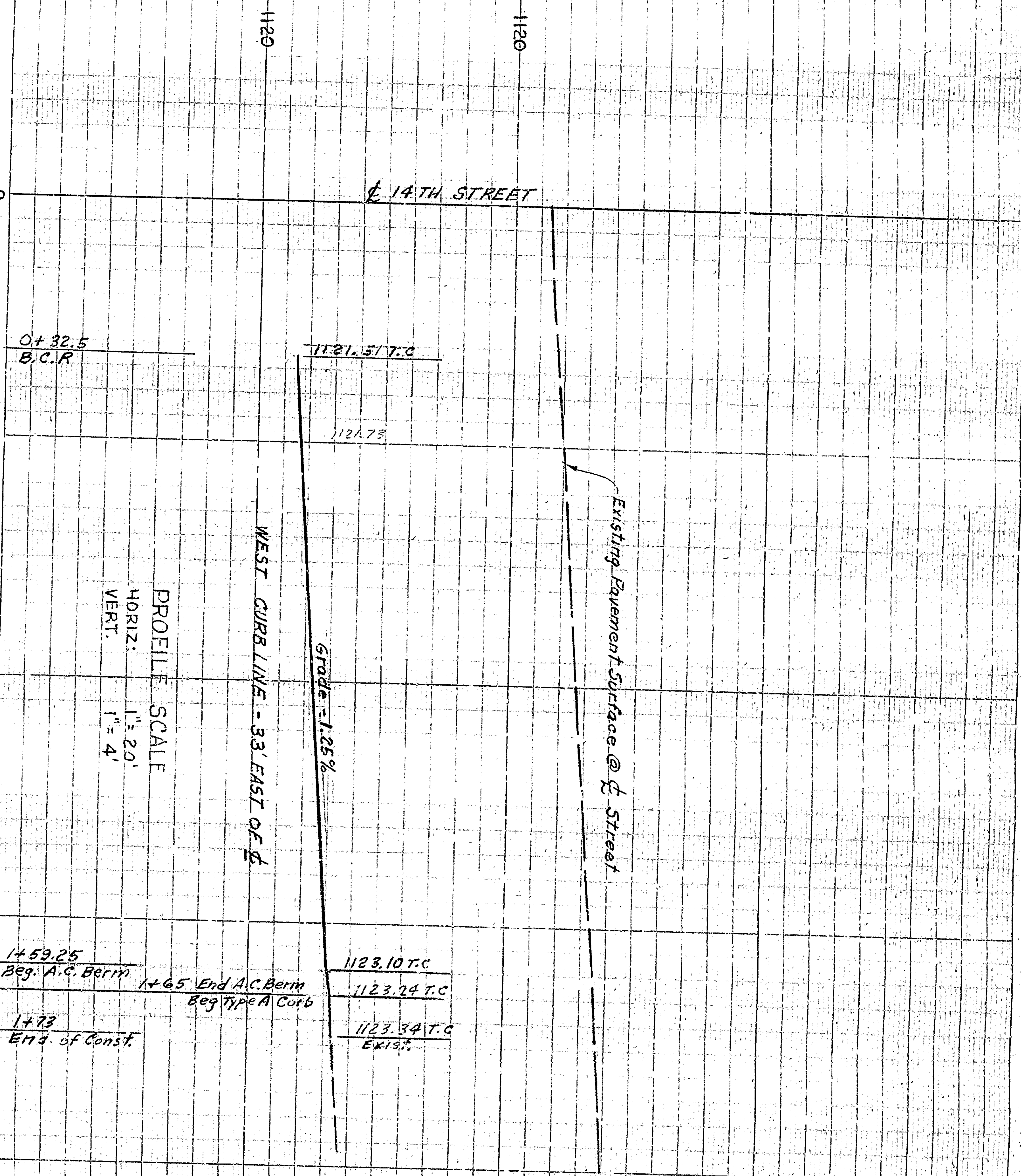


14TH STREET



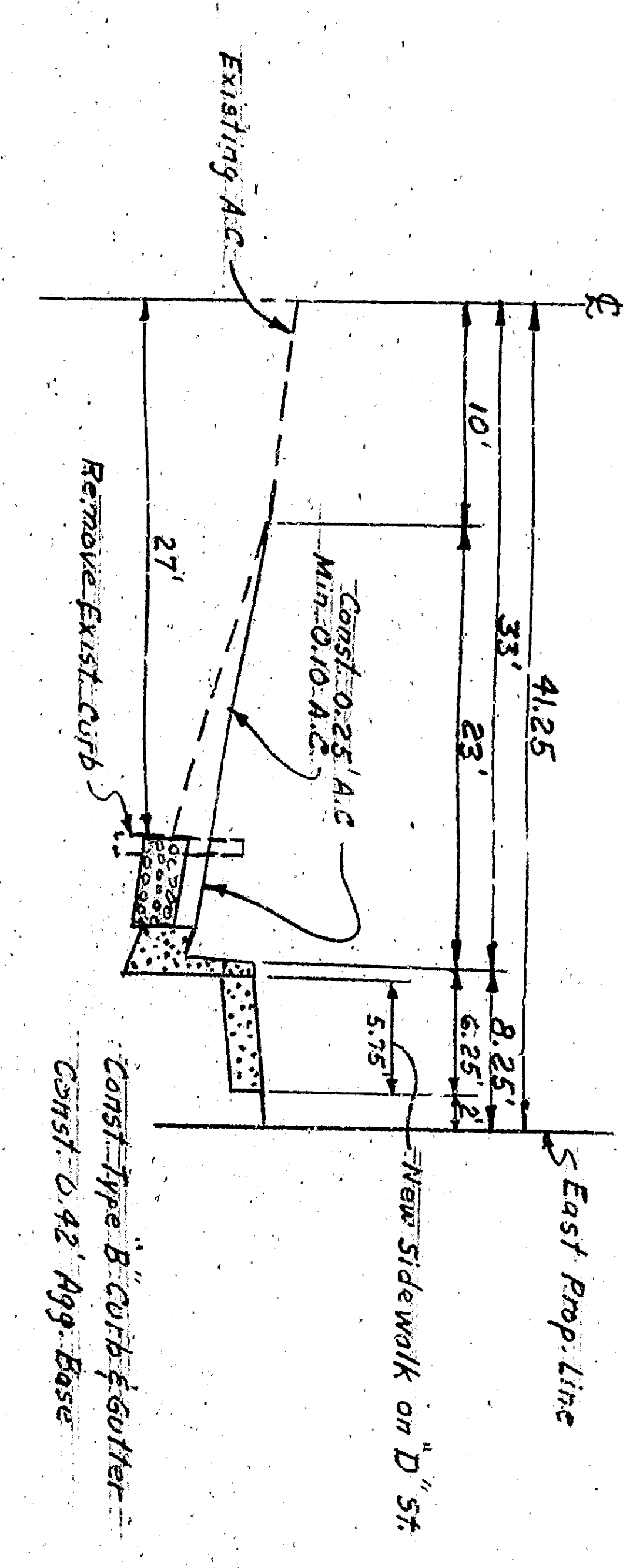
"D" STREET



PROFILE SCALE
HORIZ: 1" = 20'
VERT: 1" = 4'

TYPICAL "X" SECTION

SCALE: HORIZ. 1" = 10'
VERT. 1" = 8'



GENERAL NOTES

1. All work to be done on this plan shall be done in conformity with applicable City and State laws, ordinances, rules and regulations, and the Standard Specifications for Road and Bridge Construction, as adopted by the City Engineer.
2. Exact locations for utility lines shall be indicated on the field. Driveway width shall be in accordance with City standards.

APPROVED	19 11 19	DEPARTMENT OF ENGINEERING
CITY ENGINEER		CITY OF SAN BERNARDINO
DRAWN BY	5/20/09	STREET IMPROVEMENT
CHECKED BY		NORTHEAST CORNER 14 TH ST & "D" ST.
SHEET 1 OF 1		